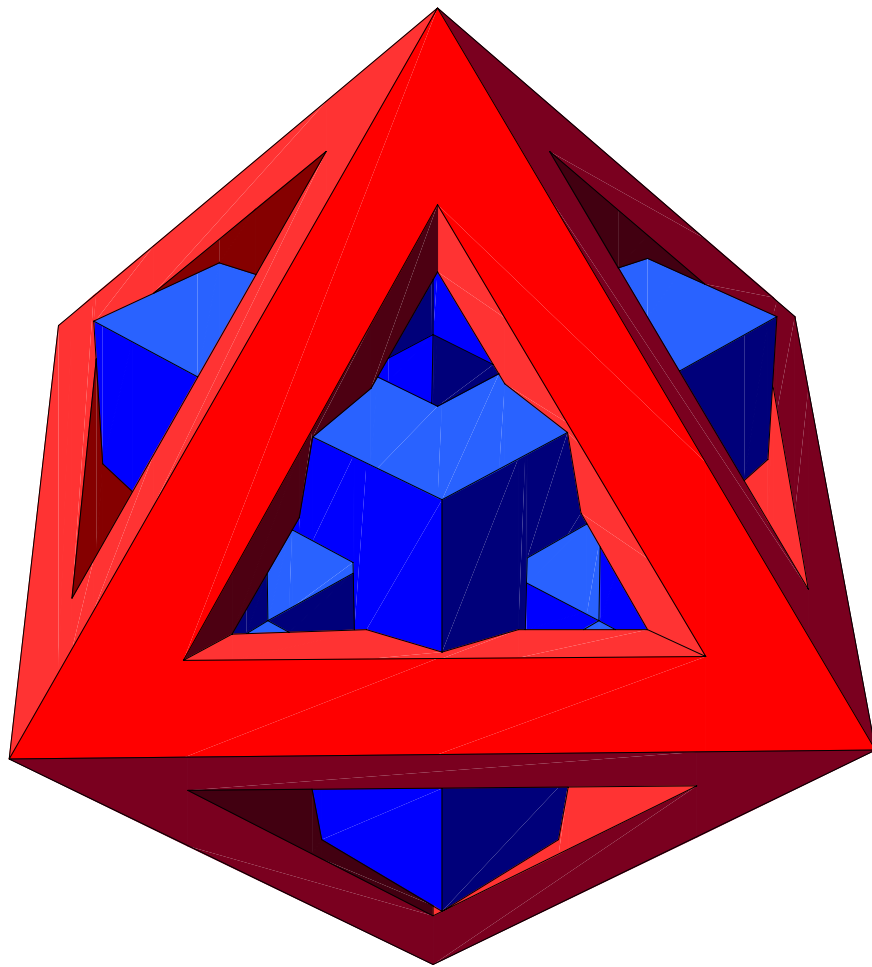


THINGIMAJIGS

PAPER MODELS

OCTAHEDRON-CUBE DUALITY

A CUBE INSIDE AN OCTAHEDRON

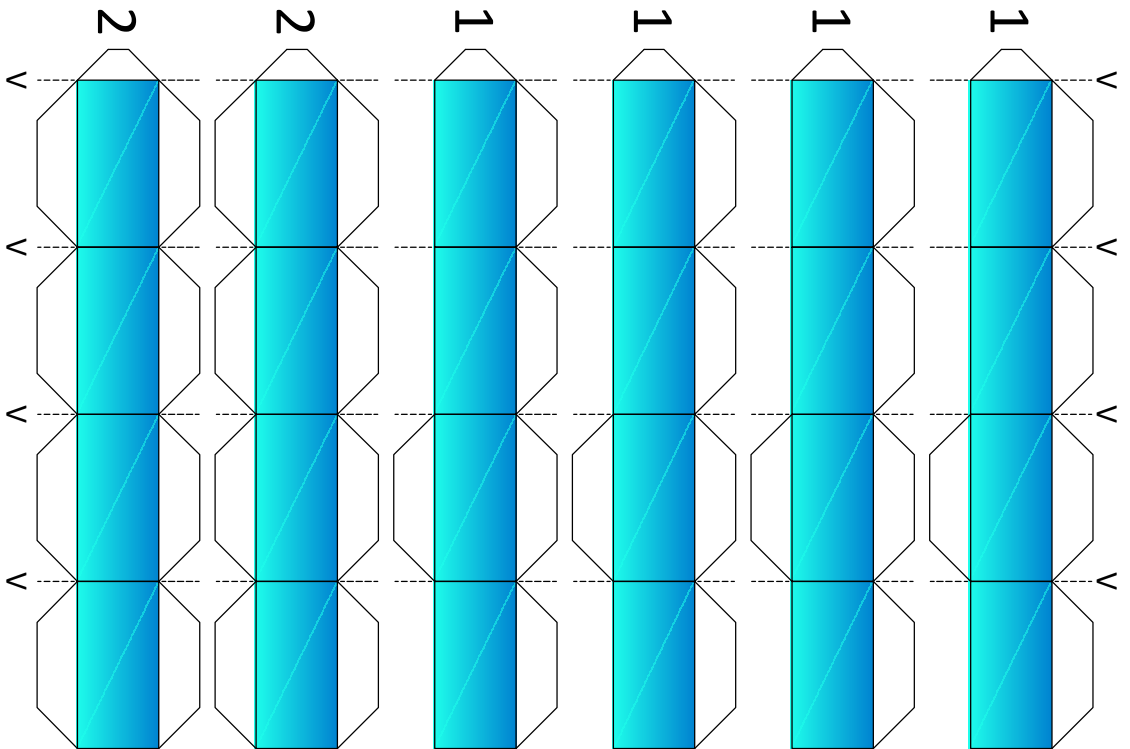
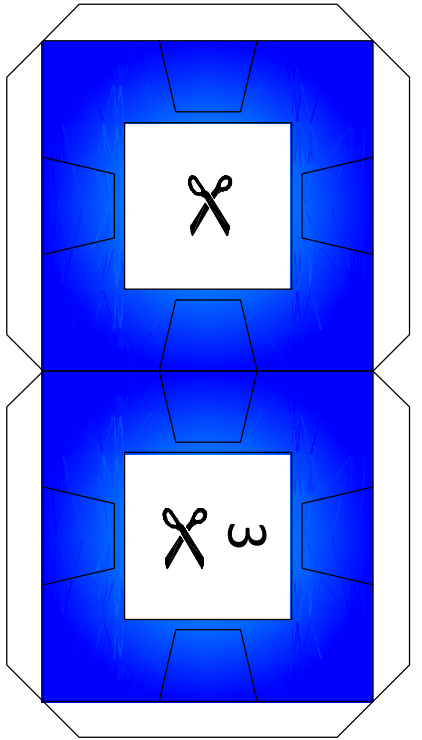
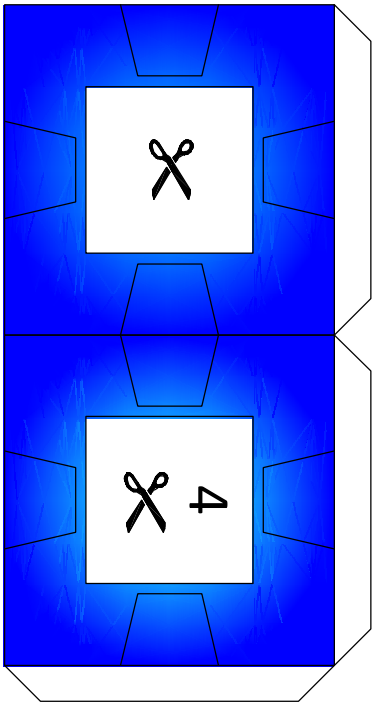
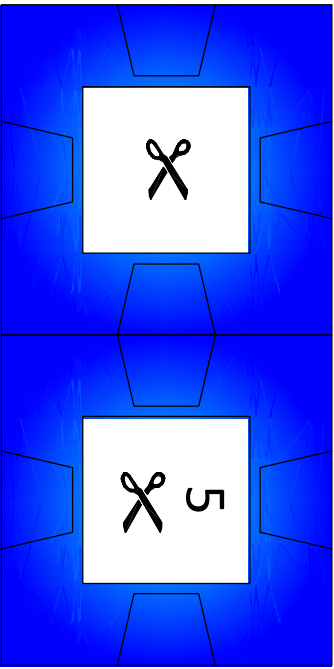
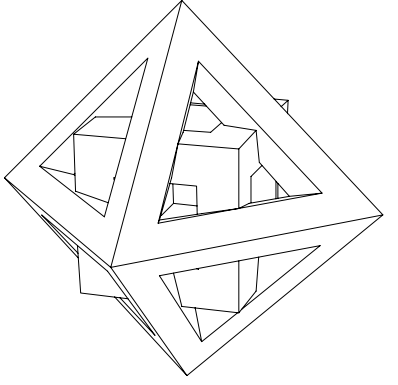
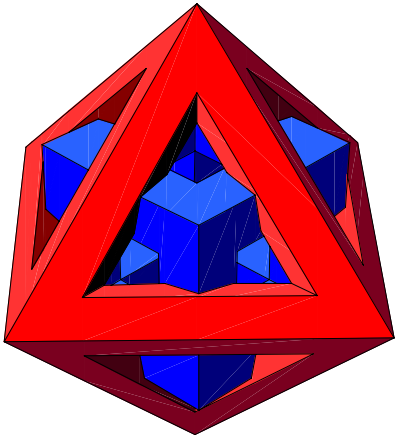



SW14.05-28-03574

thingimajigs.com/pmq



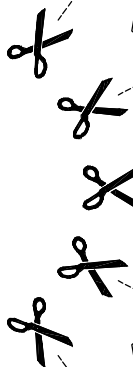
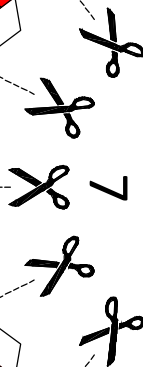
THINGI MAJIGS
PAPER MODELS



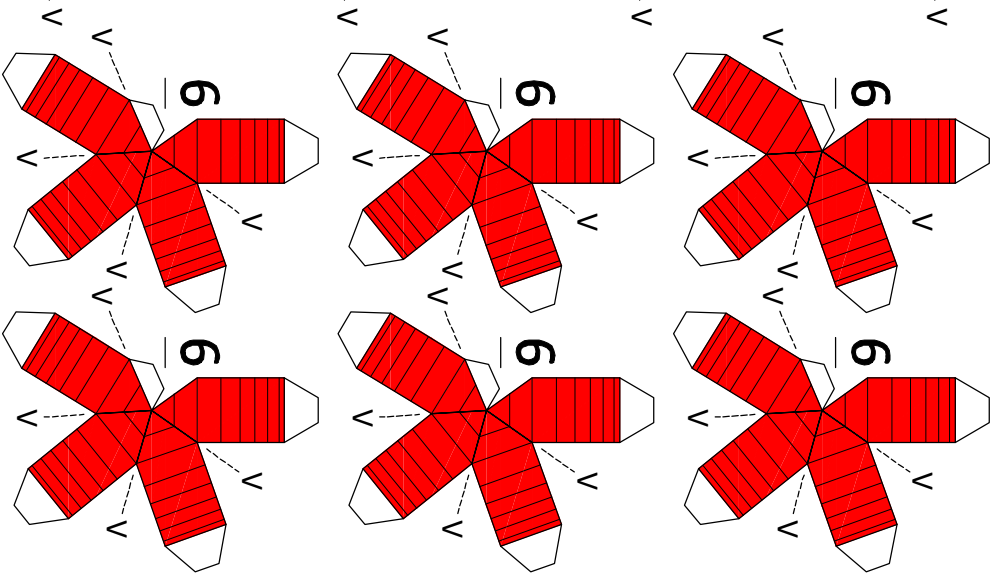
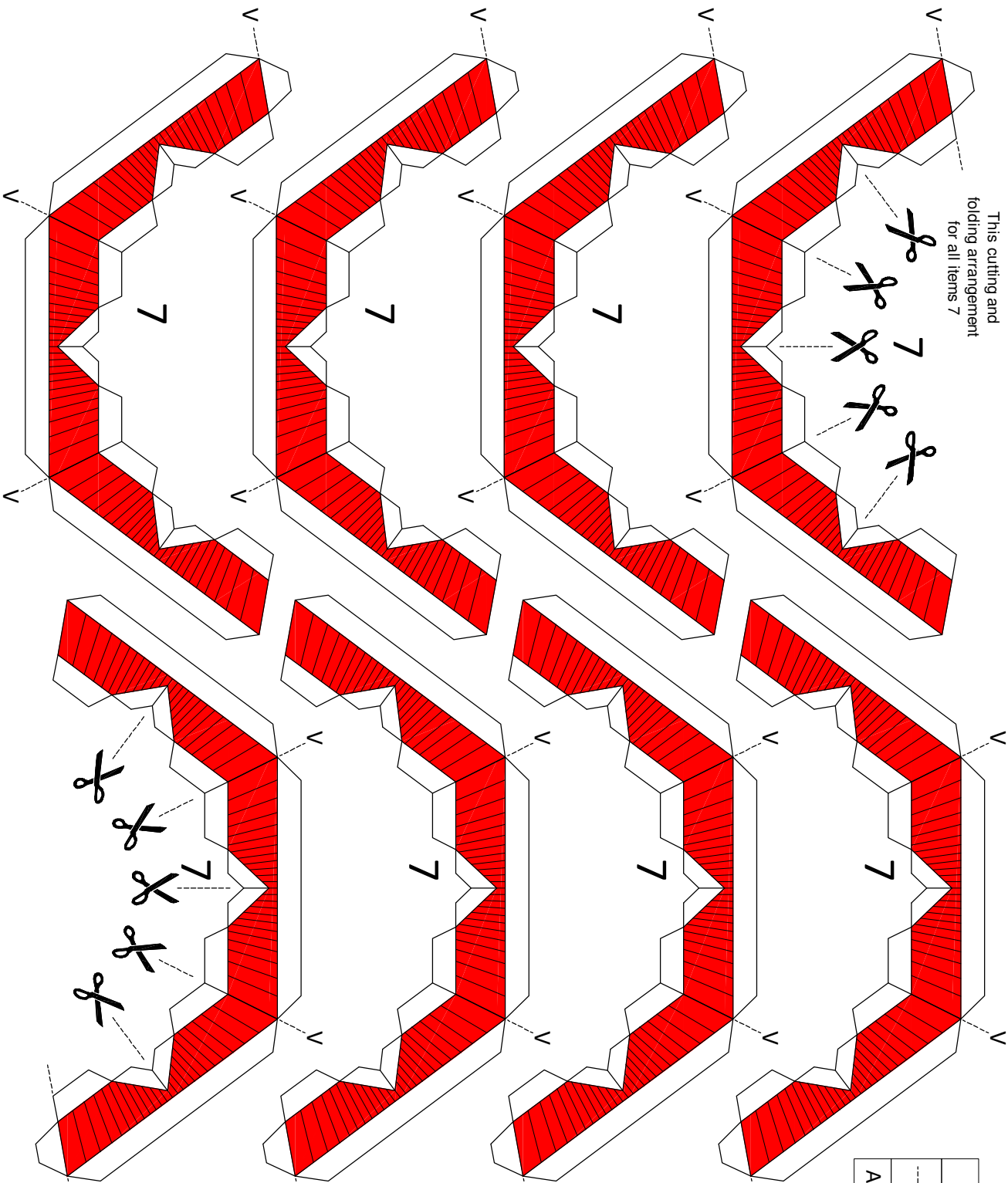
LEGEND	
-----V-----	VALLEY FOLD
	CUT THIS AREA OUT
ALL UNMARKED FOLDS ARE MOUNTAIN FOLDS	



This cutting and folding arrangement for all items 7



LEGEND	
-----V-----	VALLEY FOLD
	CUT THIS AREA OUT
ALL UNMARKED FOLDS ARE MOUNTAIN FOLDS	





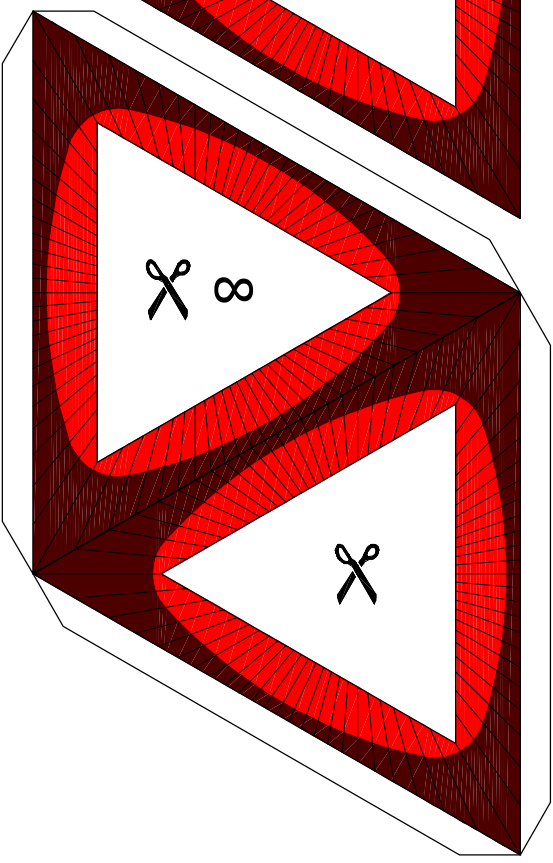
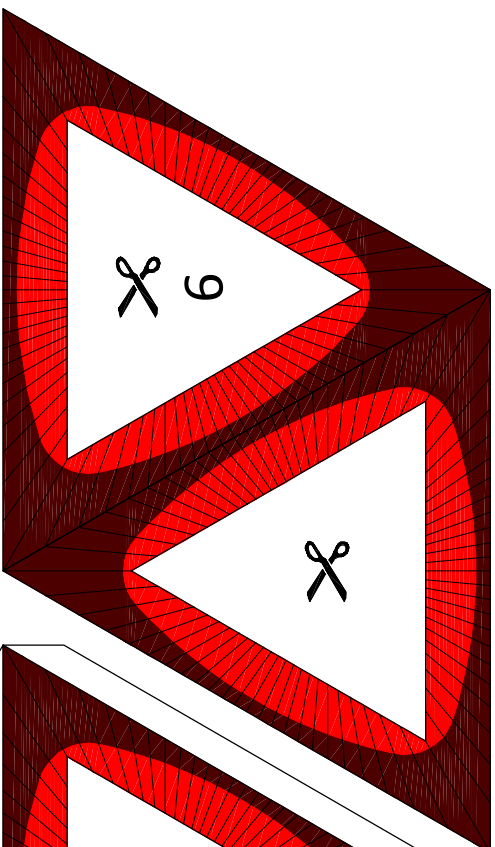
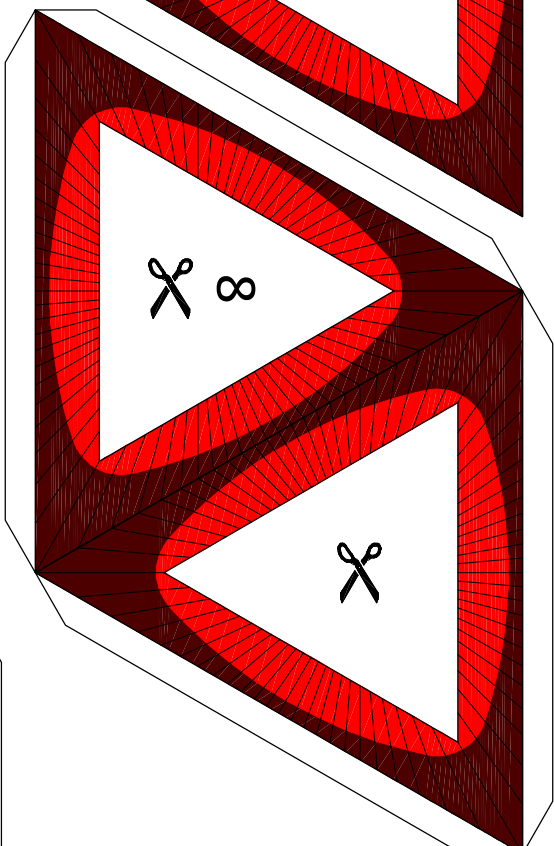
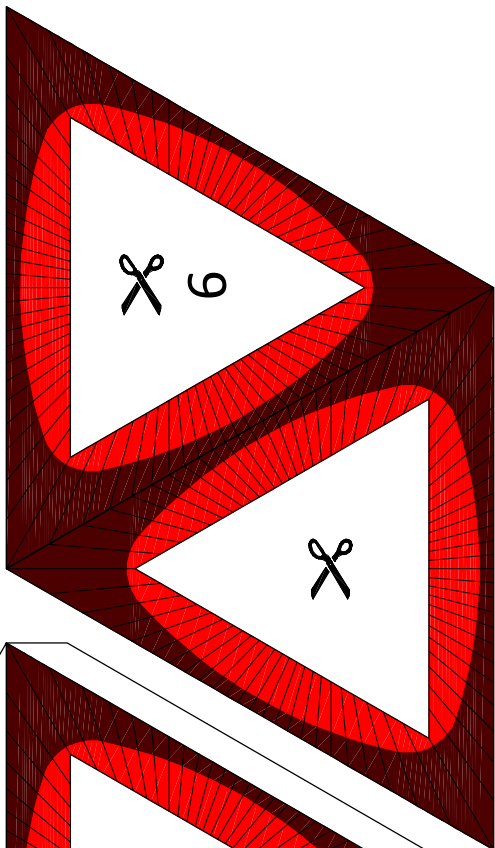
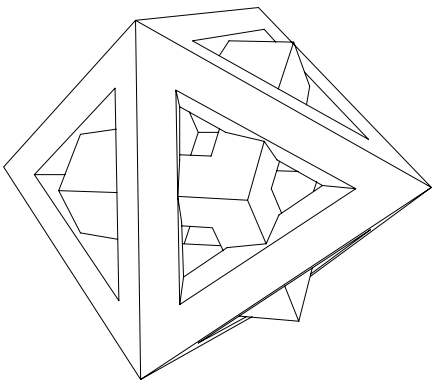
LEGEND

V----- VALLEY FOLD

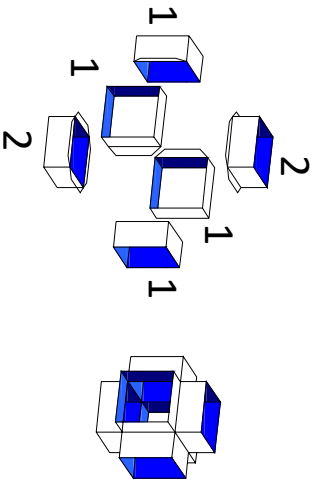


CUT THIS
AREA OUT

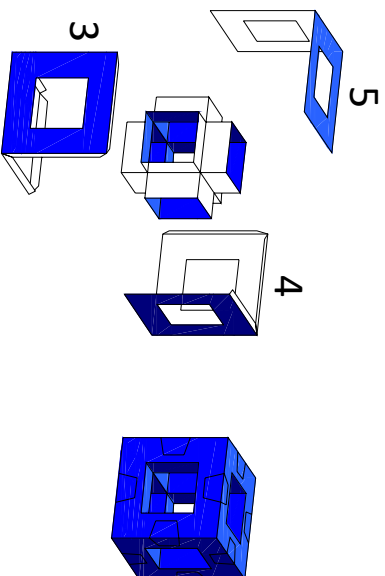
ALL UNMARKED FOLDS ARE MOUNTAIN FOLDS



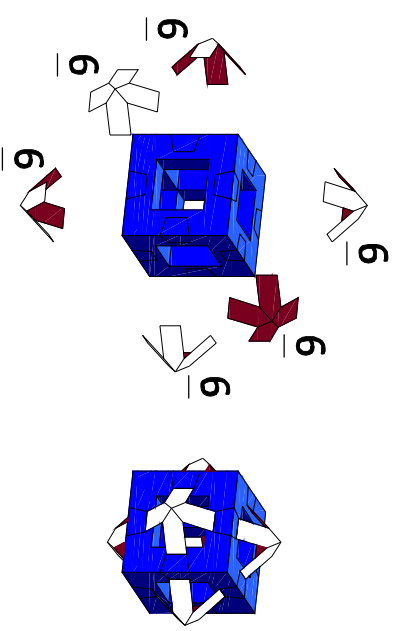
STEP 1



STEP 2

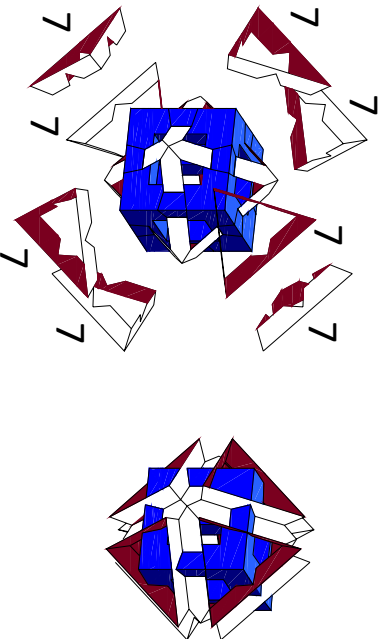


STEP 3

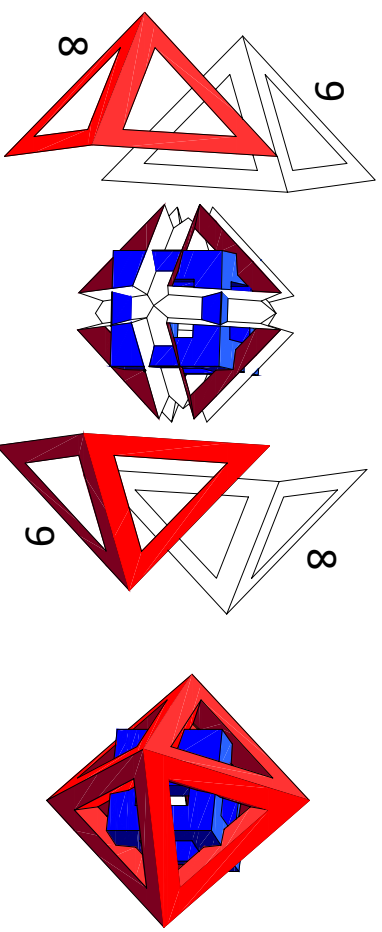


SW14.05-28-03574

STEP 4



STEP 5



LEGEND

---V--- VALLEY FOLD

CUT THIS AREA OUT

ALL UNMARKED FOLDS ARE MOUNTAIN FOLDS

