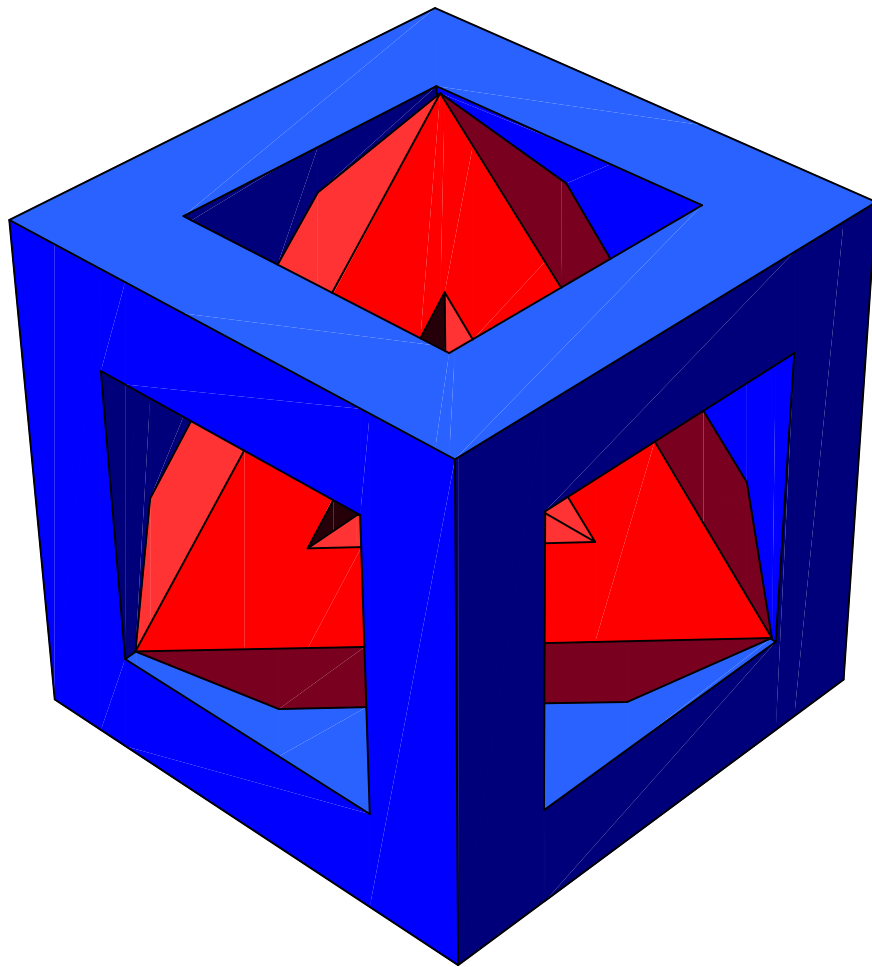


# THINGIMAJIGS

## PAPER MODELS

### CUBE-OCTAHEDRON DUALITY

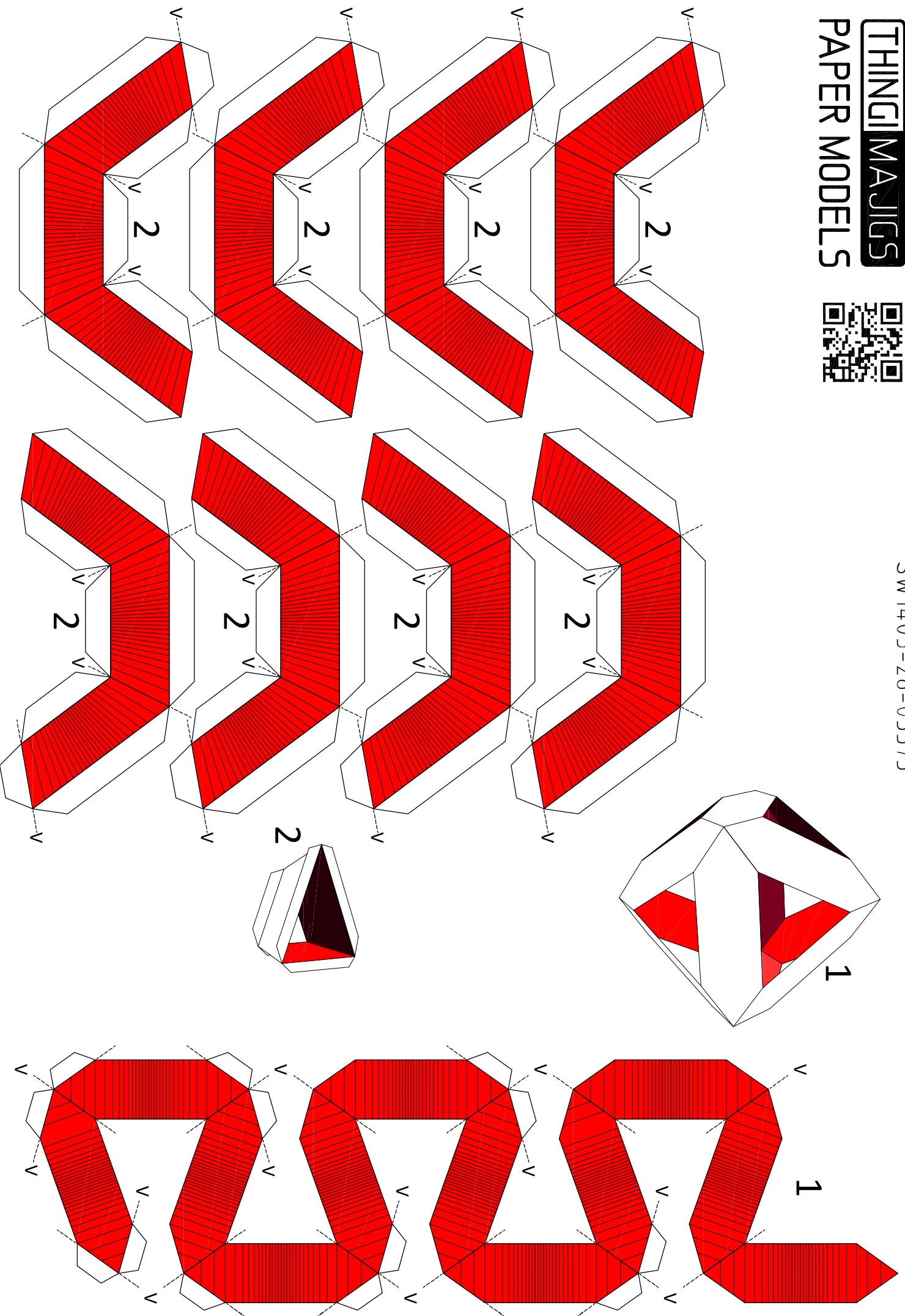
AN OCTAHEDRON INSIDE A CUBE

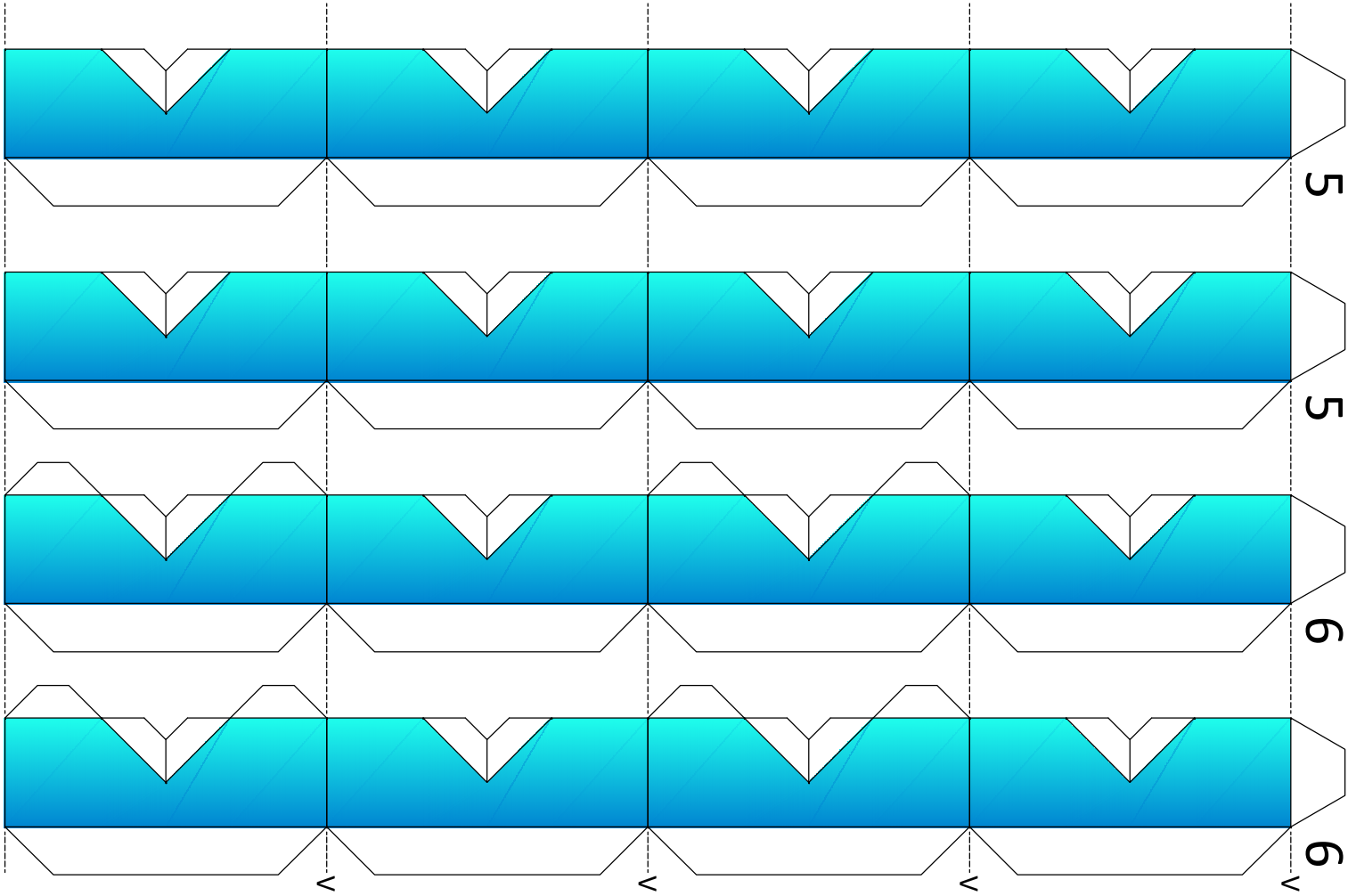


SW1405-28-03573

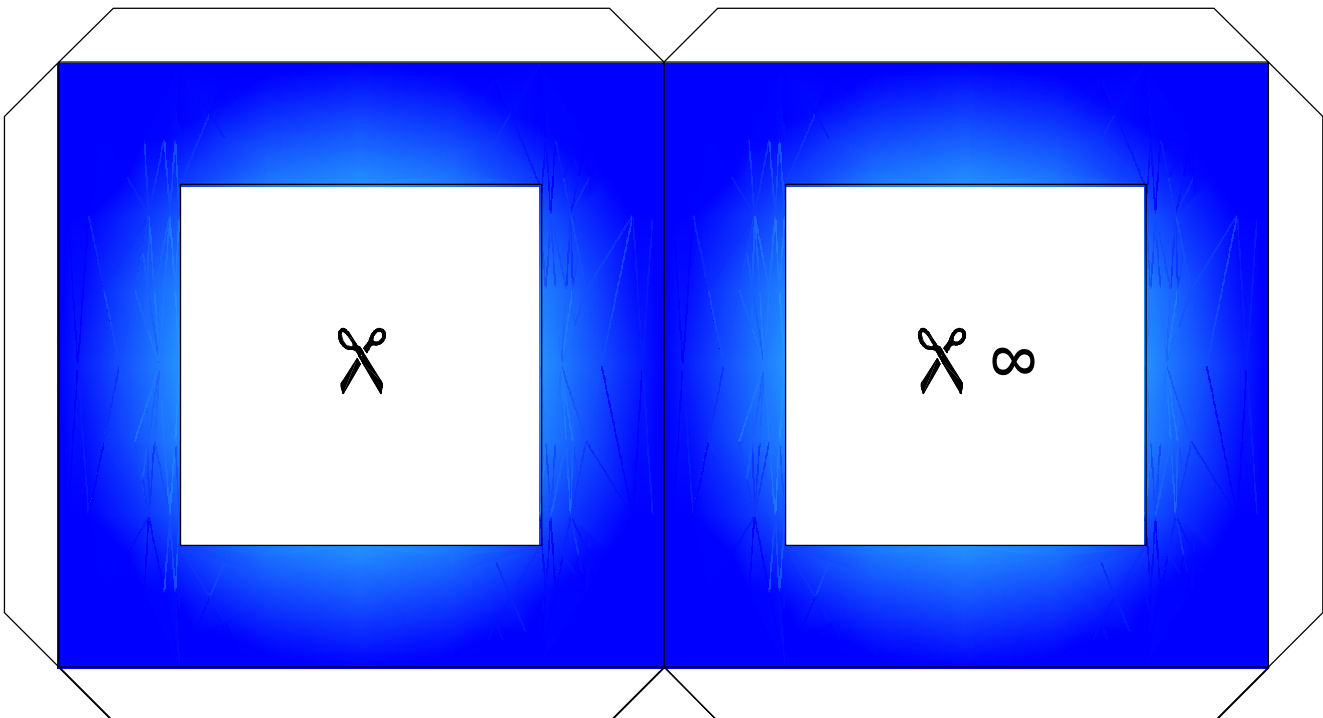
[thingimajigs.com/pmq](http://thingimajigs.com/pmq)

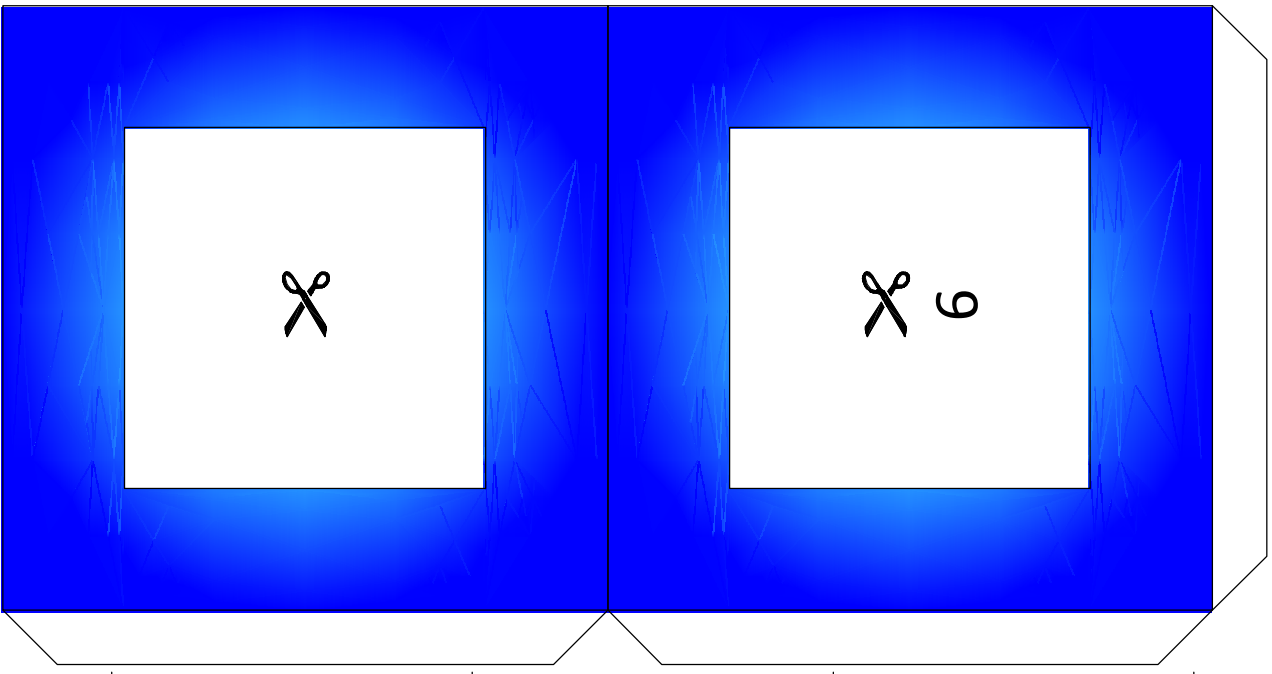
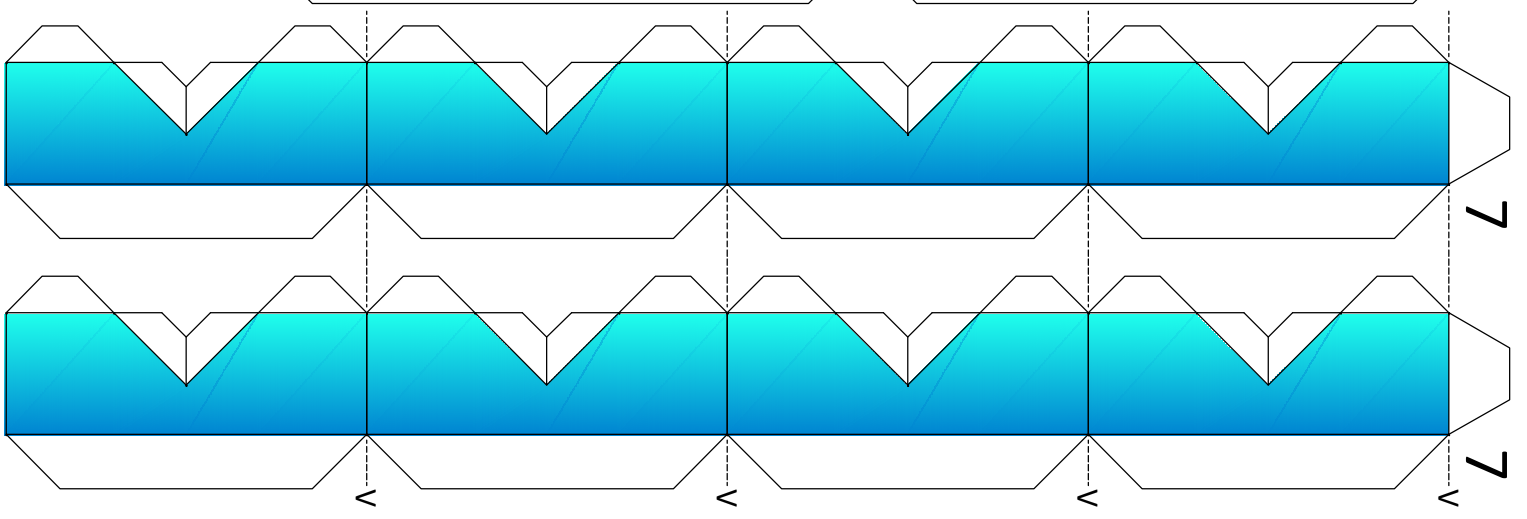
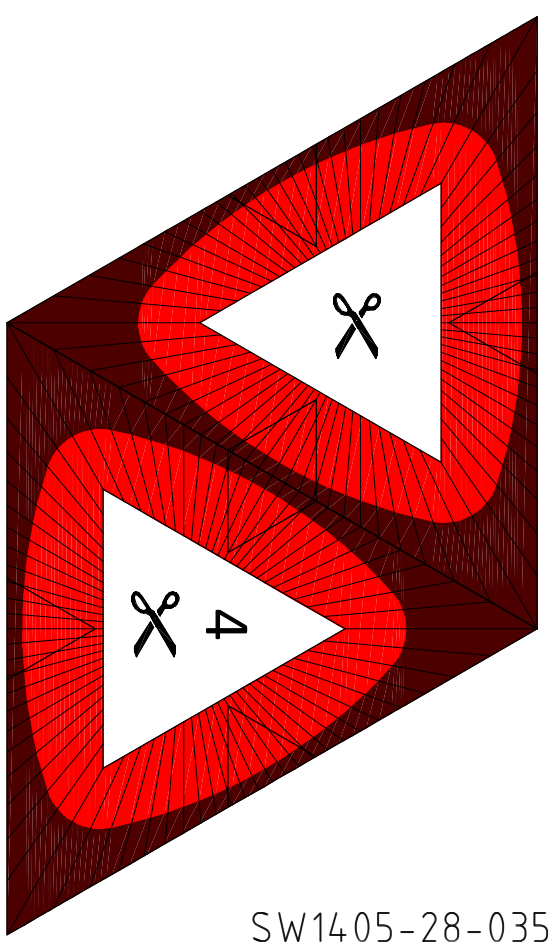
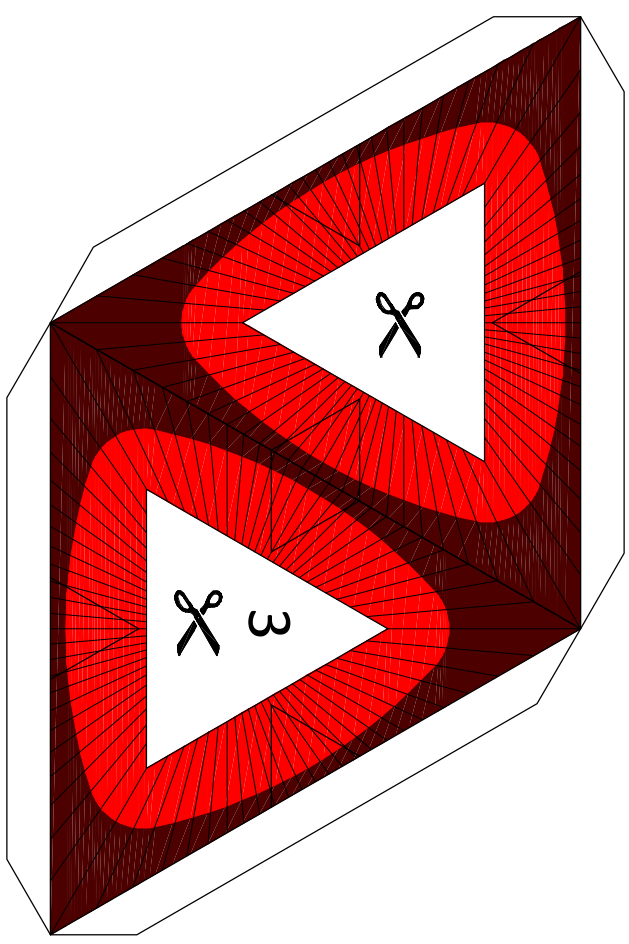






<b>LEGEND</b>	
V	VALLEY FOLD
	CUT THIS AREA OUT
ALL UNMARKED FOLDS ARE MOUNTAIN FOLDS	



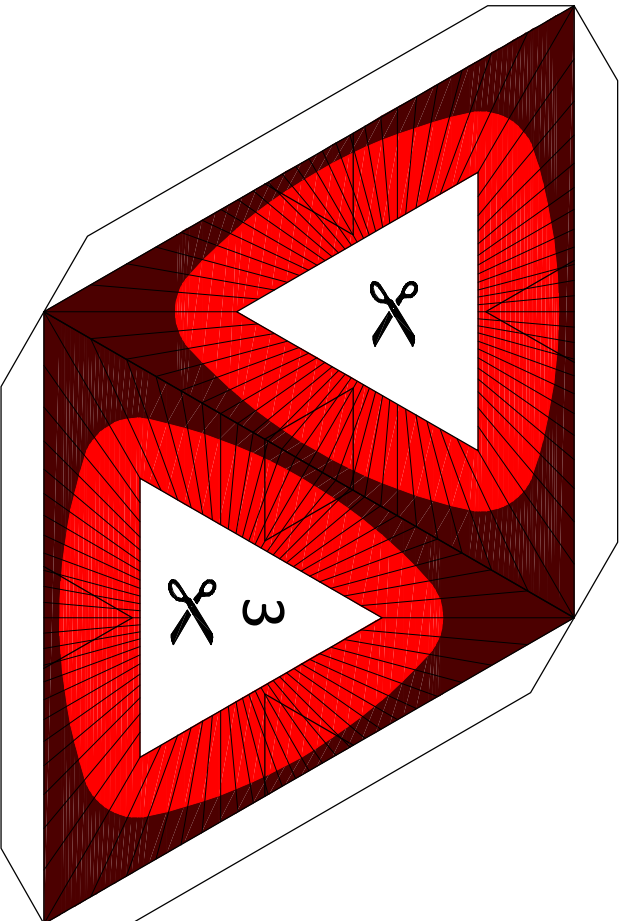
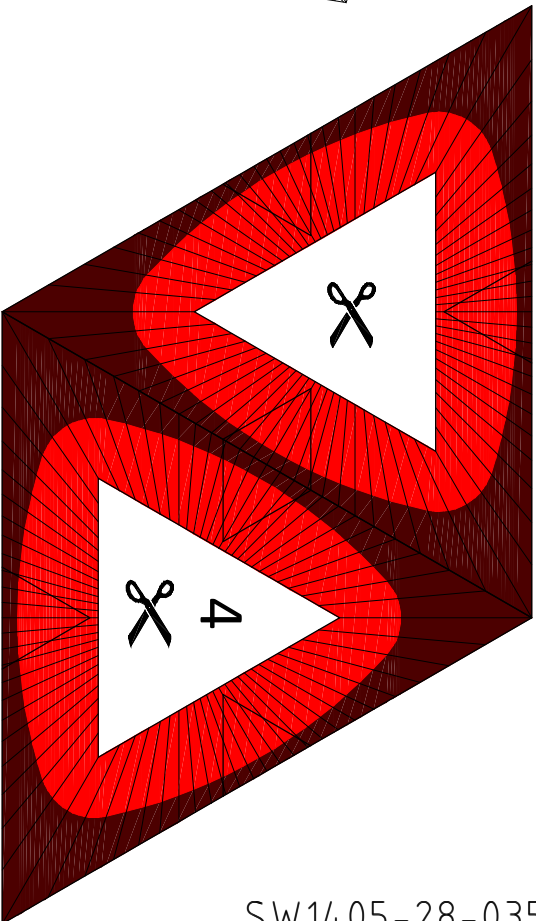
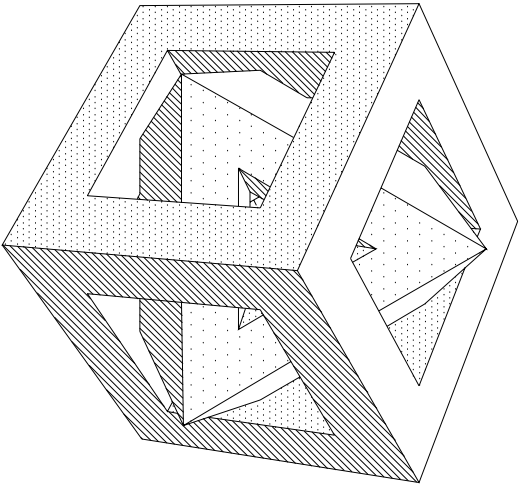
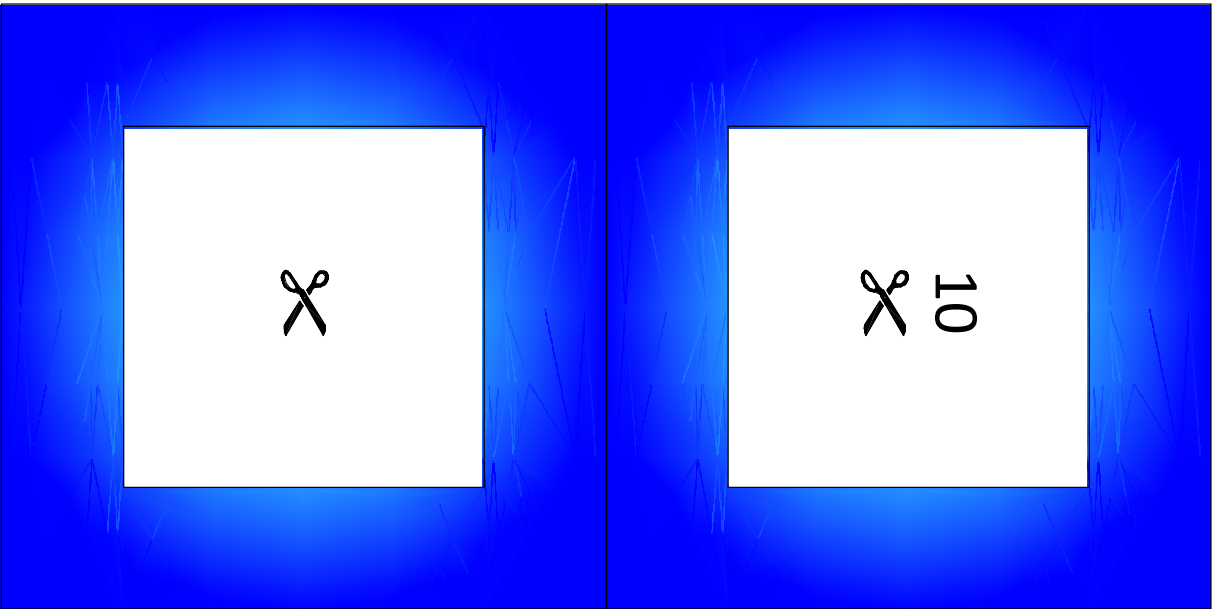


**LEGEND**

----- V ----- VALLEY FOLD

CUT THIS AREA OUT

ALL UNMARKED FOLDS ARE MOUNTAIN FOLDS



**THINGI MATHICS**  
PAPER MODELS



SW1405-28-03573

**LEGEND**

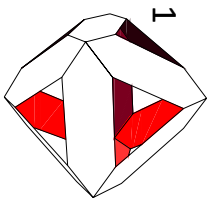
-----V----- VALLEY FOLD



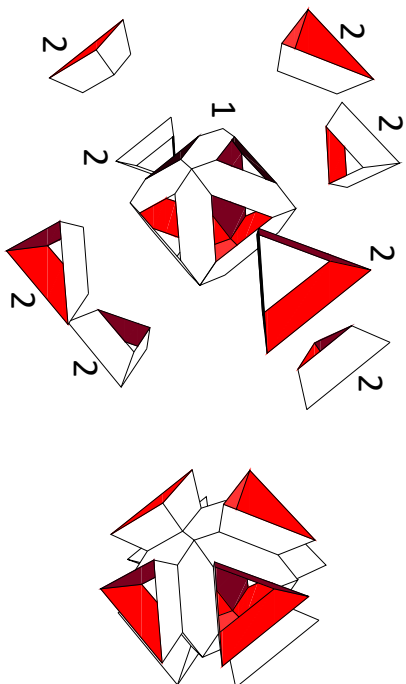
CUT THIS  
AREA OUT

ALL UNMARKED FOLDS ARE MOUNTAIN FOLDS

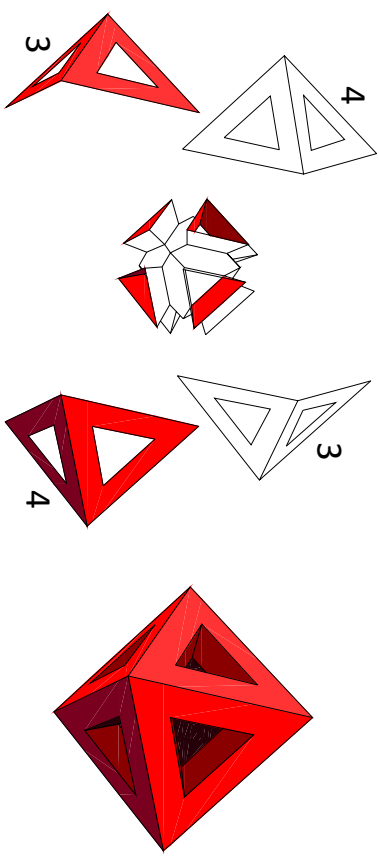
## STEP 1



## STEP 2



## STEP 3



### LEGEND

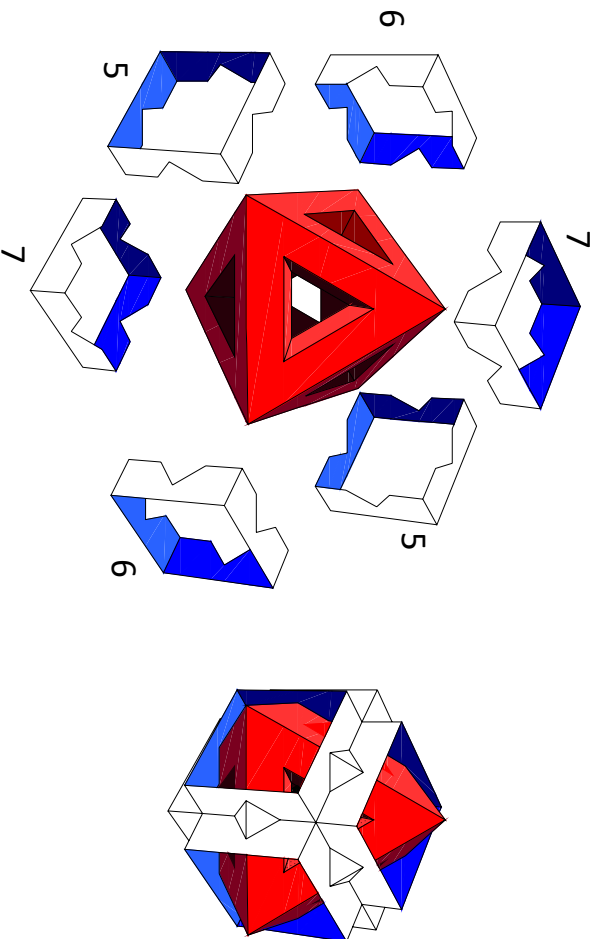
---V--- VALLEY FOLD



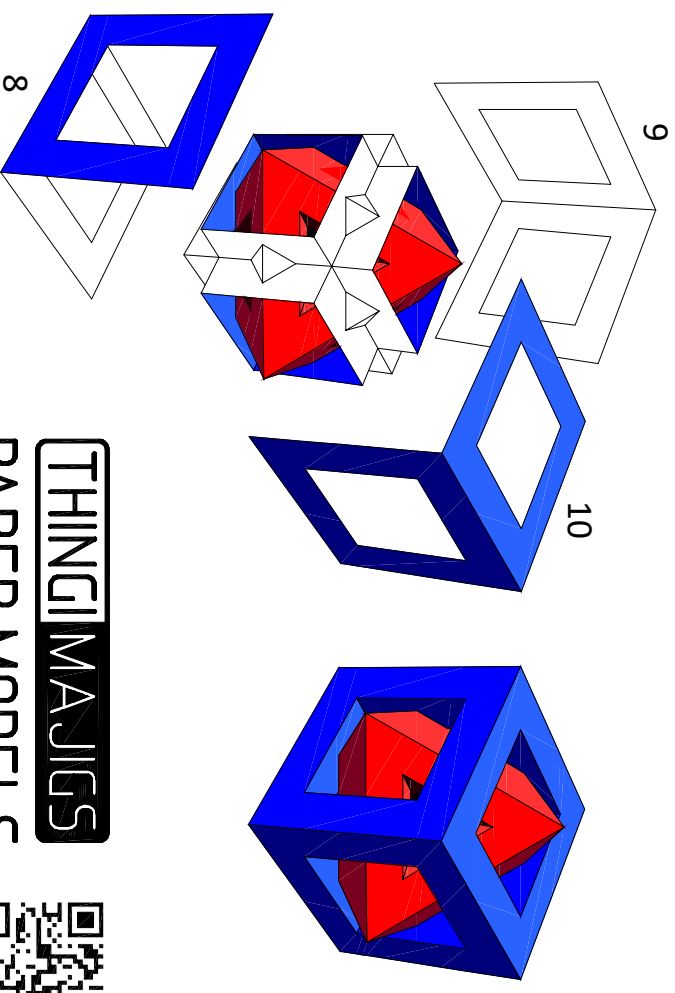
CUT THIS  
AREA OUT

ALL UNMARKED FOLDS ARE MOUNTAIN FOLDS

## STEP 4



## STEP 5



SW14.05-28-03573

**THINGI MATHICS**  
PAPER MODELS

